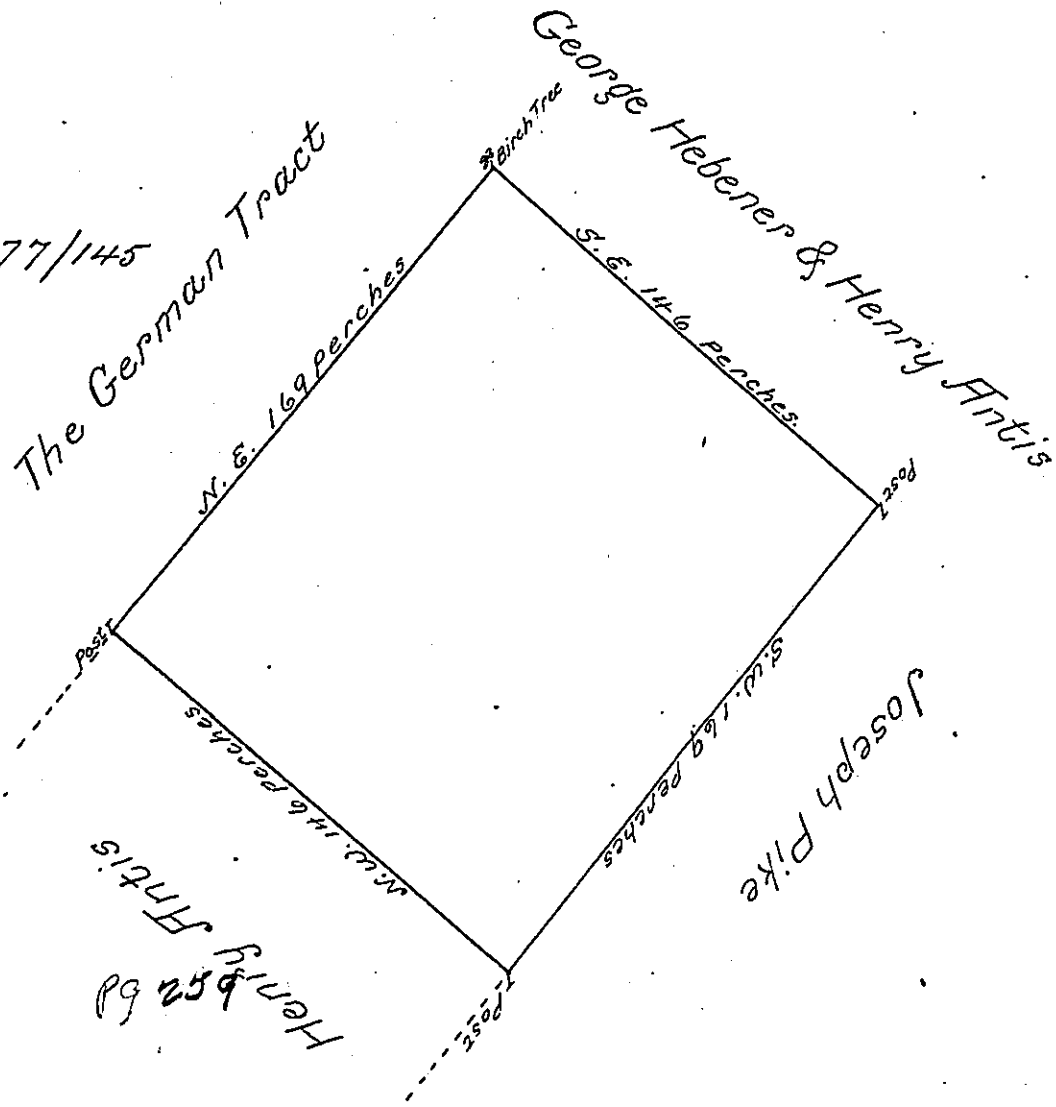


169  
 146  
 1014  
 676  
 169  
 106 | 2467400 / 23277 / 145  
 34928  
 287

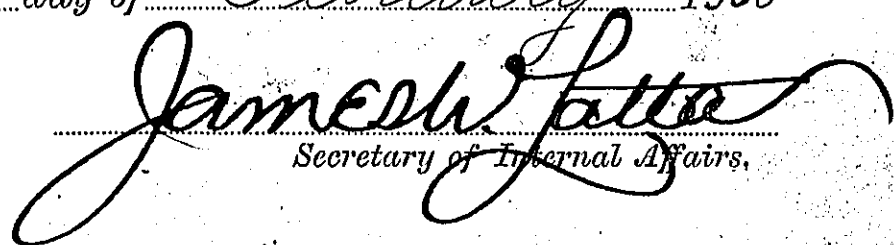


By Virtue of a Warrt. from the Honble. the Proprietaries, dated the 25th. day of March 1741 Surveyed to ~~Henry~~ Joseph Bittin the above described Tract of Land Situate in Limerick Township in the County of Philada. Cont. 145 1/2 acres and allowance of Six pcent.

Surveyed the 30th. of March 1741  
by Nichs. Scull.

Part of a Tract survd. for }  
the Proprietaries use. }

IN TESTIMONY that the above is a copy of the original remaining on file in the Department of Internal Affairs of Pennsylvania, made conformably to an Act of Assembly approved the 16th day of February, 1833, I have hereunto set my Hand and caused the Seal of said Department to be affixed at Harrisburg, this sixth day of February 1900

  
 Secretary of Internal Affairs.